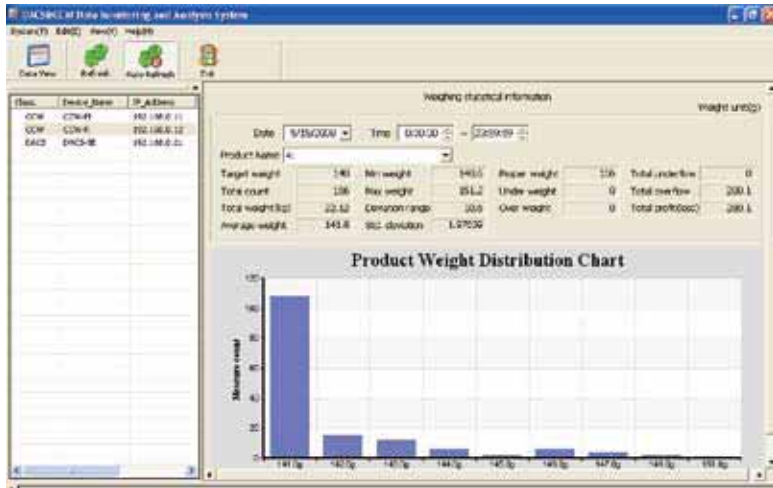


# i-STATION LINK

## Data Collection and Viewing System

Ishida's data collection software, i-STATION LINK, collects weighing data from CCW multihead weighers and DACS checkweighers via an Ethernet network and displays it in an easily-understood format on a PC. The system allows checking of real-time production status, as well as further detailed analysis of the information, with a PC.

### View real-time and historical production data for each machine

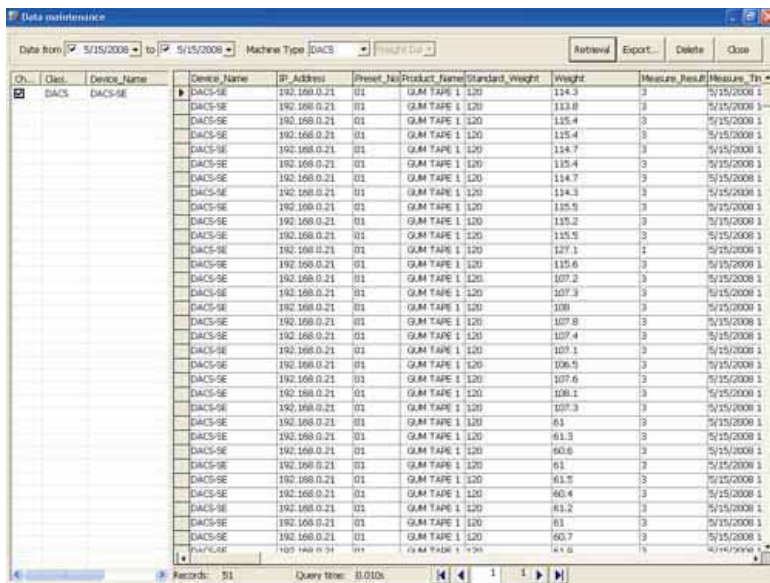


Weighing results and product weight distribution are displayed in an easy-to-read format, with instant updates for selected machines.

Specific weighing results can be displayed for each machine by date and time, so that past production data can be analyzed.



### Individual Weighing Result



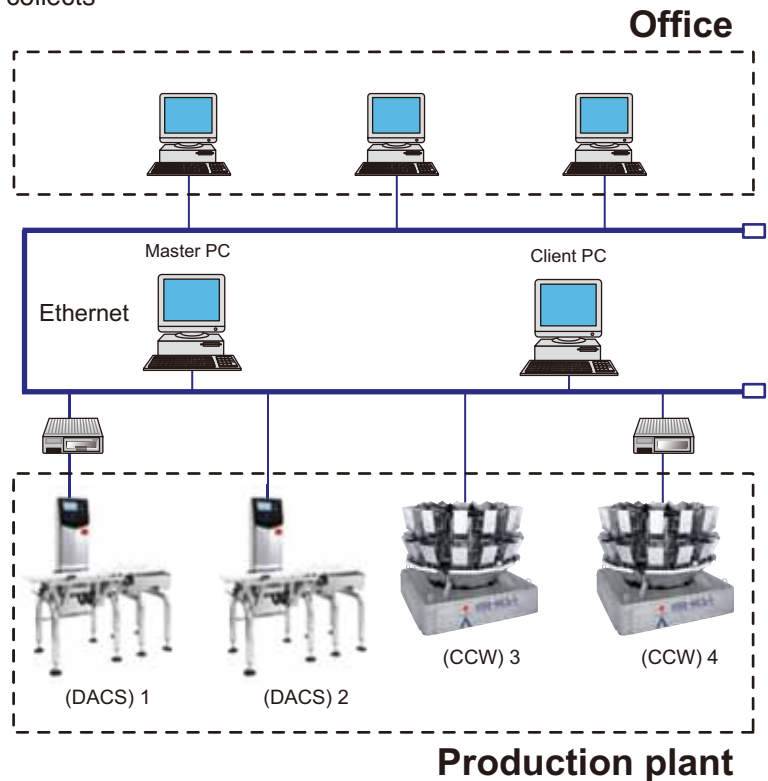
Ch.	Dist.	Device Name	Device Name	IP Address	Preset No	Product Name	Standard Weight	Weight	Measure Result	Measure Tr
01	DACS	DACS-SE	DACS-SE	192.168.0.21	01	GUM TAPE 1	120	114.3	3	5/15/2008 1
01	DACS	DACS-SE	DACS-SE	192.168.0.21	01	GUM TAPE 1	120	113.8	3	5/15/2008 1
01	DACS	DACS-SE	DACS-SE	192.168.0.21	01	GUM TAPE 1	120	115.4	3	5/15/2008 1
01	DACS	DACS-SE	DACS-SE	192.168.0.21	01	GUM TAPE 1	120	115.4	3	5/15/2008 1
01	DACS	DACS-SE	DACS-SE	192.168.0.21	01	GUM TAPE 1	120	114.7	3	5/15/2008 1
01	DACS	DACS-SE	DACS-SE	192.168.0.21	01	GUM TAPE 1	120	114.4	3	5/15/2008 1
01	DACS	DACS-SE	DACS-SE	192.168.0.21	01	GUM TAPE 1	120	114.7	3	5/15/2008 1
01	DACS	DACS-SE	DACS-SE	192.168.0.21	01	GUM TAPE 1	120	114.3	3	5/15/2008 1
01	DACS	DACS-SE	DACS-SE	192.168.0.21	01	GUM TAPE 1	120	115.5	3	5/15/2008 1
01	DACS	DACS-SE	DACS-SE	192.168.0.21	01	GUM TAPE 1	120	115.2	3	5/15/2008 1
01	DACS	DACS-SE	DACS-SE	192.168.0.21	01	GUM TAPE 1	120	115.5	3	5/15/2008 1
01	DACS	DACS-SE	DACS-SE	192.168.0.21	01	GUM TAPE 1	120	127.1	1	5/15/2008 1
01	DACS	DACS-SE	DACS-SE	192.168.0.21	01	GUM TAPE 1	120	115.6	3	5/15/2008 1
01	DACS	DACS-SE	DACS-SE	192.168.0.21	01	GUM TAPE 1	120	107.2	3	5/15/2008 1
01	DACS	DACS-SE	DACS-SE	192.168.0.21	01	GUM TAPE 1	120	107.3	3	5/15/2008 1
01	DACS	DACS-SE	DACS-SE	192.168.0.21	01	GUM TAPE 1	120	108	3	5/15/2008 1
01	DACS	DACS-SE	DACS-SE	192.168.0.21	01	GUM TAPE 1	120	107.8	3	5/15/2008 1
01	DACS	DACS-SE	DACS-SE	192.168.0.21	01	GUM TAPE 1	120	107.4	3	5/15/2008 1
01	DACS	DACS-SE	DACS-SE	192.168.0.21	01	GUM TAPE 1	120	107.1	3	5/15/2008 1
01	DACS	DACS-SE	DACS-SE	192.168.0.21	01	GUM TAPE 1	120	106.5	3	5/15/2008 1
01	DACS	DACS-SE	DACS-SE	192.168.0.21	01	GUM TAPE 1	120	107.6	3	5/15/2008 1
01	DACS	DACS-SE	DACS-SE	192.168.0.21	01	GUM TAPE 1	120	108.1	3	5/15/2008 1
01	DACS	DACS-SE	DACS-SE	192.168.0.21	01	GUM TAPE 1	120	107.3	3	5/15/2008 1
01	DACS	DACS-SE	DACS-SE	192.168.0.21	01	GUM TAPE 1	120	61	3	5/15/2008 1
01	DACS	DACS-SE	DACS-SE	192.168.0.21	01	GUM TAPE 1	120	61.3	3	5/15/2008 1
01	DACS	DACS-SE	DACS-SE	192.168.0.21	01	GUM TAPE 1	120	60.6	3	5/15/2008 1
01	DACS	DACS-SE	DACS-SE	192.168.0.21	01	GUM TAPE 1	120	61	3	5/15/2008 1
01	DACS	DACS-SE	DACS-SE	192.168.0.21	01	GUM TAPE 1	120	61.5	3	5/15/2008 1
01	DACS	DACS-SE	DACS-SE	192.168.0.21	01	GUM TAPE 1	120	60.4	3	5/15/2008 1
01	DACS	DACS-SE	DACS-SE	192.168.0.21	01	GUM TAPE 1	120	61.2	3	5/15/2008 1
01	DACS	DACS-SE	DACS-SE	192.168.0.21	01	GUM TAPE 1	120	61	3	5/15/2008 1
01	DACS	DACS-SE	DACS-SE	192.168.0.21	01	GUM TAPE 1	120	60.7	3	5/15/2008 1
01	DACS	DACS-SE	DACS-SE	192.168.0.21	01	GUM TAPE 1	120	61.0	3	5/15/2008 1

Individual weighing data is displayed in a list, and all the data can be exported to an Excel file by selecting a model name.



## Network & Software Configuration

The application software working on Windows PC collects weighing data via an Ethernet network.



## Specification

Machine *1	DACS-V / V3 / W / H / WN / HN / Z    CCW-Z / RZ / DZ / NZ / M / R
Connecting unit	MAX. 16 units
System configuration	PC *2, OS - Windows XP SP2, Windows Vista, ( Japanese, English, Chinese ) CPU - 1GHz or over / Memory - 1GB or over / HDD - 6GB or over Microsoft Office Excel / Ethernet port / CD drive
Capacity *3	Max. 200 per minute ( each unit )
Storage term *4	30 days
Language	Display: English, Japanese, Chinese, Spanish, Portuguese Operation manual : English, Japanese    *Please contact Heat and Control regarding other languages.
Scope of supply	Application software for PC and machine, Ethernet connector for Ishida machine *5
Collecting data	IP address, preset no., product name, reference weight, weight, weighing result, weighing time
Display item	Date and time, product name, reference weight, total count, total weight, average weight, minimum weight, maximum weight, deviation range, standard deviation, proper weight, under weight, over weight, total under weight, total over weight, total product loss, histogram *The software supports count priority weighing of CCW multihead weigher (optional feature)

- 1) Each model needs option for integration.
- 2) Operation requires dedicated PC and it should be selected depending on power supply condition and installation environment.
- 3) This number is theoretical maximum speed and varies depending upon system condition and other factors.
- 4) Storage term depends on HDD capacity and machine capability. There is a possibility of missing data due to power failure or cable disconnection.
- 5) Wiring work of network, Ethernet cable, network hub, and PC needs to be prepared by customer.



Ishida, the world leader in weighing technology, also manufactures a full line of multihead weighers, checkweighers, X-ray inspection systems, and packaging machines.

Specifications and design are subject to change without notice.

**ISHIDA**

**ISHIDA CO., LTD.**

44 SANNO-CHO, SHOGOIN, SAKYO-KU  
KYOTO, 606-8392 JAPAN  
PHONE: 81-75-771-4141  
FACSIMILE: 81-75-751-1634  
URL: <http://www.ishida.com>

**HEAT AND CONTROL**

**HEAT AND CONTROL, INC.**

21121 CABOT BLVD.  
HAYWARD, CA 94545-1132 USA  
PHONE: 1(800)227-5980  
1(510)259-0500  
FACSIMILE: 1(510)259-0600  
[www.heatandcontrol.com](http://www.heatandcontrol.com)  
[info@heatandcontrol.com](mailto:info@heatandcontrol.com)