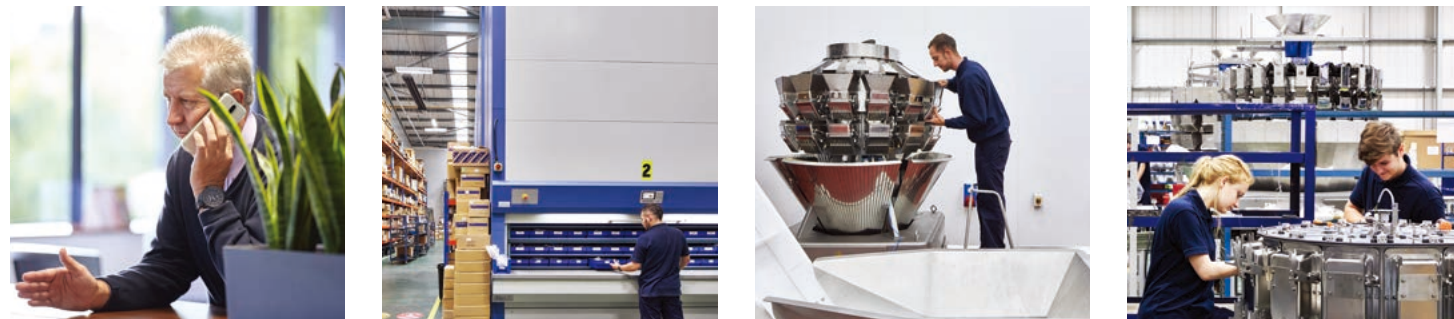


Working with you every step of the way

Our extensive R&D investment is directed at meeting the challenges of the fast-changing food industry around the globe. We aim to support our partners fully, from the very start of the buying process, and you will find many equipment brochures, visual animations and case studies available on our website. When you are ready to make contact, a well-resourced network of Ishida companies, distributors and agents, extending across the world, can provide advice and organise demonstrations and trials.

Installation is rapid and efficient. For integrated packing lines, we use proven project management techniques and methodologies, tuned to your key objectives and specifications. A dedicated service engineering team helps to maximise the performance, functionality and reliability of our installed base. In addition, spares facilities are strategically placed throughout the territory, offering 24-hour delivery in most cases.



helpline • spares • service • training

i-FORT /i-FORT Browse

Production Monitoring and Data
Management Systems



i-FORT

Production Monitoring and Data Management Systems

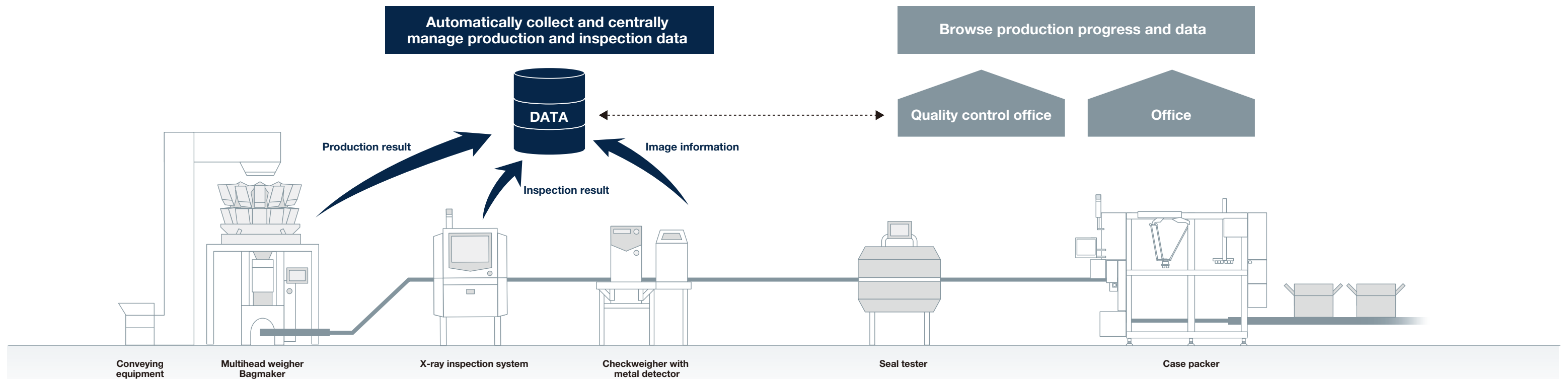
i-FORT improves production efficiency with centralized management

Centrally manage the information from the machines. Able to monitor the performance data, production line status and inspection result from the office. Boost the establishment of traceability and CCP management, as well as easily recognize the bottleneck of the production line. i-FORT strongly supports solving production quality control issues.

“Visualization” our latest inspection data offering

Increase productivity by utilizing information and communication technology-based management and visualizing operational data. Use data to help solve a variety of problems on your production line.

- ▲ Analyze collected data in order to develop production efficiency
- ▲ Share the real-time production progress to smoothly communicate with field workers
- ▲ Identify production bottleneck by utilizing operational information
- ▲ Reduce checking/recording time of inspections
- ▲ Improve efficiency of production line by utilizing production report
- ▲ Prevent product failure caused by insufficient production control



“Visualization” of product quality

Visualize "food safety" and "reliability" using the latest technological product quality control system

Establish traceability and apply HACCP to protect the company brand. Visualize the product quality with i-FORT inspection data. Easily manage CCP with recording and handling of inspection data.



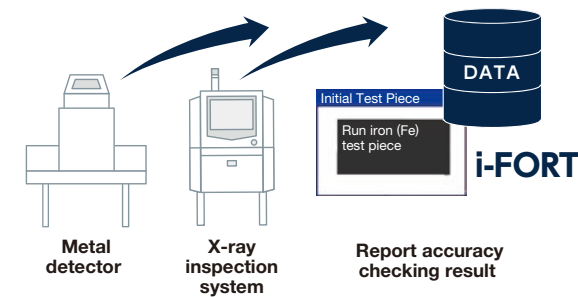
Support CCP Management

Support CCP management

Support writing and recording documents based on HACCP management system. Digitalize CCP management report, such as inspection accuracy checking and inspection progress report. Record data accurately and reduce workload.

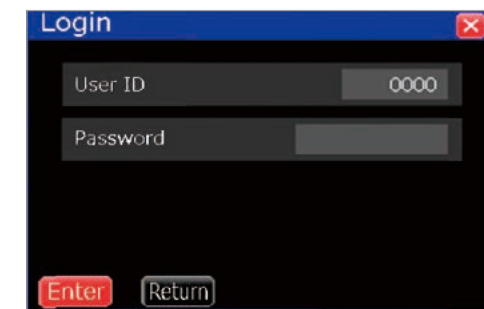
Check Accuracy of Inspection Machines

Support accuracy checks before and during production to verify meeting the administration standard.



Manage Login Users

User IDs and passwords determine the access rights and the levels of operation for users who operate PCs and machines.



Record and manage the inspection process



Record and manage correction



Documentation

Write critical documents, such as an inspection record or a correction record.



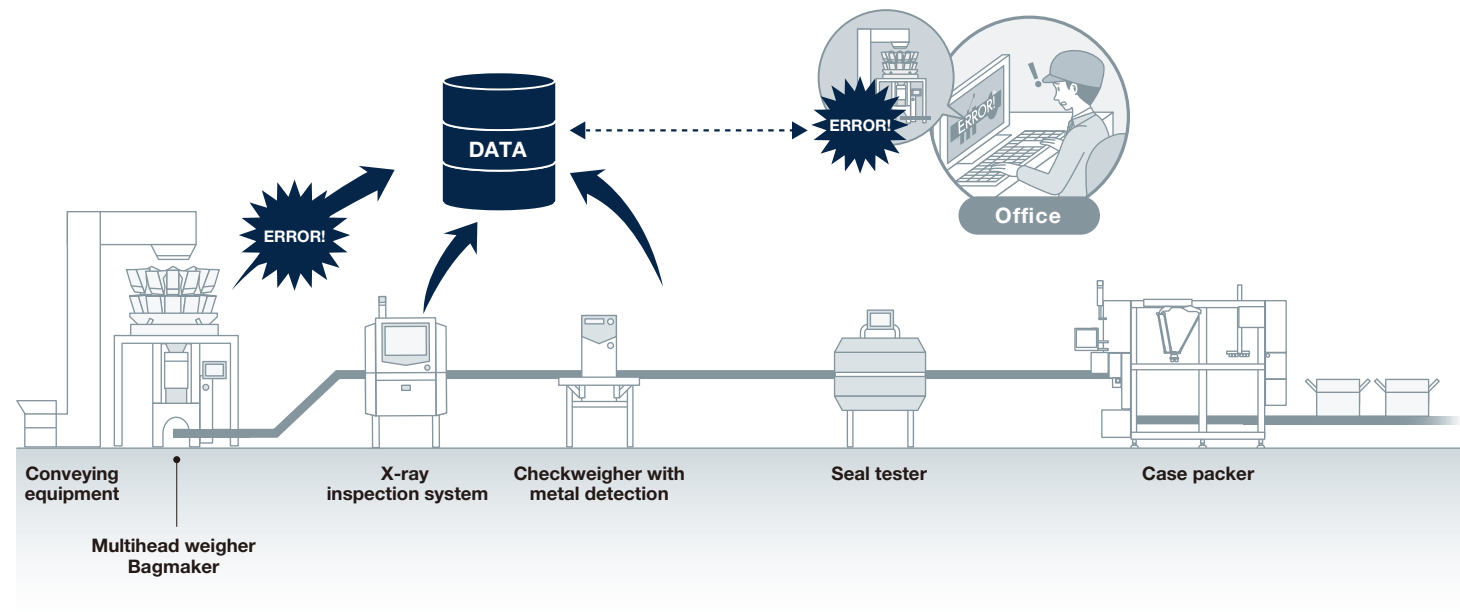
“Visualization” of production

Reduce operational waste and support increased production development

Reduce workload and production downtime and increase operation rate. i-FORT visualizes production status and operation data and also reduces manual working time for recording.

Quickly identify production errors and eliminate bottlenecks on the line.

Gather all production line data into one computer and monitor the field status. If something went wrong, identify the problem at an early stage of the production line.



History record function

- ▲ Management of Users Login
Set password to login and determine operator's access depending on skills and levels
- ▲ Operational History Record
Record who, when, and what settings changed
- ▲ Setting History Record
Take a back-up to restore the setting data for each machine

A variety of functions support time consuming analysis

Show graphical production progress and forecast working finish time

Visualize graphical production status and support production efficiency.



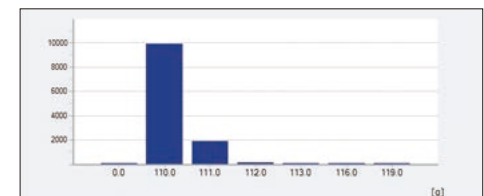
Production result screen

Automatically collect production results as a table.

| Item Name | Unit | Value | Unit | Value |
|-----------------|------|--------|--------------|----------|
| Std Value | g | 100.00 | Total Items | 148 |
| Min Weight | g | 75.00 | Proper | 77 |
| Max Weight | g | 123.40 | Under | 15 |
| Deviation Range | g | -48.40 | Over | 22 |
| | | | Size | 0 |
| | | | TI Under Wgt | 454.70 g |
| | | | TI Over Wgt | 711.50 g |
| | | | TI Lops Wgt | 238.80 g |

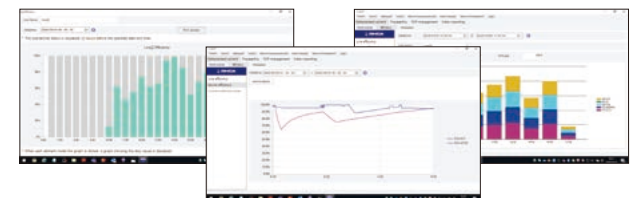
Histogram screen

Show the weighing result of a computer weigher and a weight checker as a histogram.



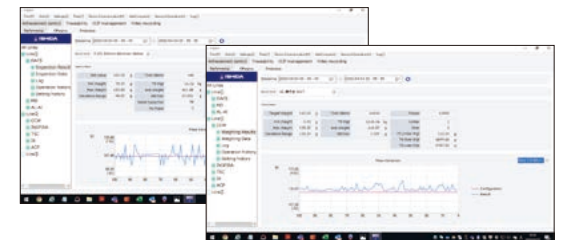
Show graphical operation data and production results

Display production line and operation data. Visualize machine performance at each hour.



Graphically represent availability rate and accumulated results

Display and compare changes in the availability rate of production lines and machines. Each machine's production result by time slot is visualized clearly to facilitate result analysis and to contribute to production efficiency improvement.



Material management

This function lists machines which received materials during the replacement timing window which supports efficient operation at production sites.

| Material name list | Device name | Material name | Elapsed time |
|---------------------|-------------|---------------|-----------------|
| 2017/06/01 08:24:18 | Line2 | MP | Cardboard Sheet |

i-FORT Browse (Option)

Software option to browse on mobile devices

Beyond visualization of production control information

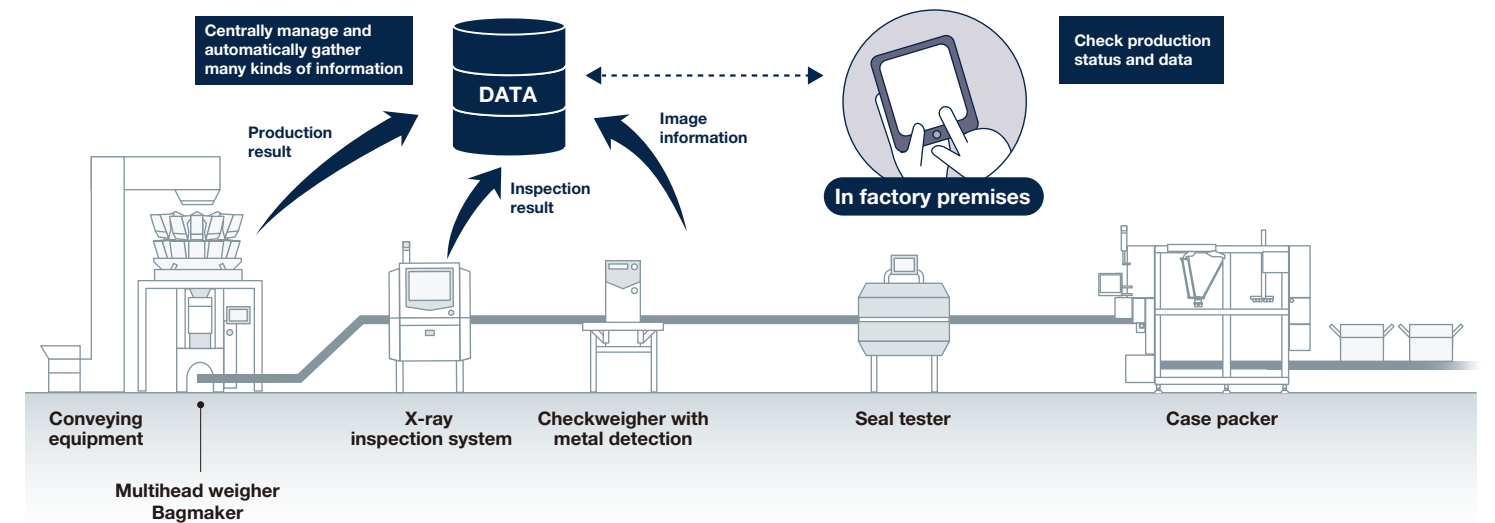
i-FORT Browse is an option that allows the user to check information from i-FORT on mobile terminals. The current status of production lines is readily available and helps establish more efficient production lines and prevents problems.

The following requirements are satisfied

- ▲ Quicker and more efficient management of production lines
- ▲ Reduced downtime with problems spotted quickly
- ▲ Smooth communication between production sites and offices

Easy access to production and inspection data

Managers can check the field status from a mobile device to increase operational efficiency and quick problem solving.

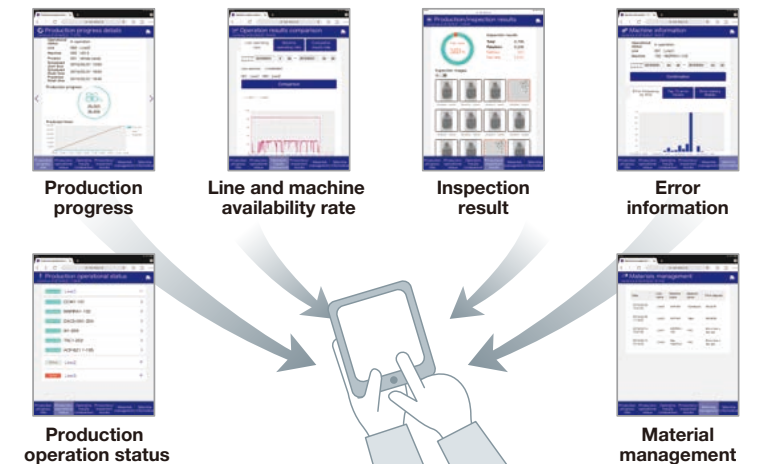
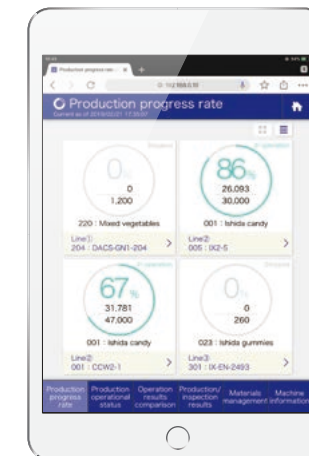


Required information shown intuitively

Data is displayed in illustrations or graphs in formats specific to i-FORT Browse. Managers and users intuitively can understand the current status and the results of production.

Accessibility to variety of data

Various data is available, such as production progress rate, machine operation status, production and inspection records, and error information. Users can quickly required data.



* Server must have i-FORT installed to browse using mobile devices

GUI (Graphical User Interface) optimized for mobile terminal display

* image is only reference

